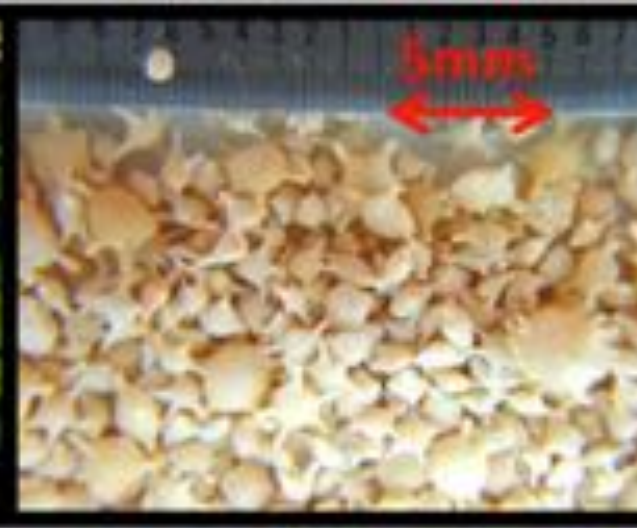


Corals



Halimeda



Foraminifera



Shells

What's the source of Boracay's powdery white sand?

According to sediment analysis made by the CECAM Project (Fortes & Nadaoka 2015), Boracay's sand is composed of coral fragments, *Halimeda* (a kind of green algae), foraminifera, and shell remains.

The calcium carbonate-forming algae that makes up part of the powdery white sand is NOT the same species as the soft, slimy algae that washes up on the shores of Boracay. The green algal bloom in Boracay turns white when dead due to the loss of the chlorophyll (green pigment) from the algal cells, but it does not become sand.